



# Reception Newsletter

Spring 2 2025



<http://www.portsdownprimary.co.uk/>

Our topic this half term is 'Down on the farm'. The children will be finding out about different animals on the farm and comparing their features. We will be visiting Staunton Country Park to see a range of animals. They will also have the opportunity to bake bread as part of their work about the Little Red Hen.

**Here is some of the fantastic learning in Reception last term!**



## Diary Dates

24.2-Chick eggs arrive

7.3-World Book Day

17.3 -Snails trip to Farm

18.3 -Bumblebee trip to farm

21.3-Rainbow Day / Red Nose Day

28.3 -Parent and child Mother's Day craft (details to follow)

4.4 -INSET day

### Newsletter challenge

Together with your child, complete the questions on the newsletter. Tick them off as you complete them.



### PE

PE is on Mondays. Children can wear their PE kits into school on PE days.

### Book bags

Please bring in your book bags everyday!

### Wow moments

Attached to our newsletter is a WOW moment card. This is for you to celebrate any new learning or skills that you have seen your child achieve at home.

Please fill in the card and return it to school so we can celebrate with the children.

### Tooth Train

The children take part in the tooth train each afternoon, brushing their teeth for 2 minutes. If you have yet to complete the consent form ,please speak to one of the teachers.

## Reading

The children have been working hard with their reading in phonics. We will continue to send home books, new letter sounds and tricky words to practise at home with you.

Please try to read with your child at least 4 times and tick on the home reading sheet. Children who have read 4 times in a week will win a small prize!

## Personal and social development

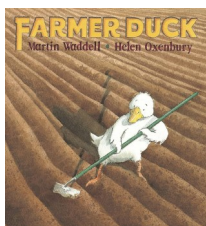
The children will continue to be supported to use the Zones of Regulation.

They will be talking about different ways to stay healthy.

## Physical development

This term, the children will be learning to form curly caterpillar letters (c a o g q d). They will be practising to use scissors with more control.

In PE, they will be learning to throw, kick and catch balls.



## Communication and language

This term we will be learning and using new vocabulary to describe and compare farm animals.

The children will be encouraged to use explain their thinking

## Literacy

This term, we will be reading a range of farm stories. The children will be retelling the stories, using story language. They will be using the letter sounds they have learnt to write words and short sentence.

### Phonics

In phonics this term the children will be consolidating the digraphs they learnt last term. These are 2 letters that make one sound, e.g. ee as in bee and ai as in pail.

Each week we will send home information on what the children have learnt that week.

Can you draw a picture of your favourite farm animal and label it?



## Maths

The children will be practising counting beyond ten, They will continue to practise subitising to 5 and finding ways of making amounts to 10.

Can you collect your teddies and count how many you have altogether?

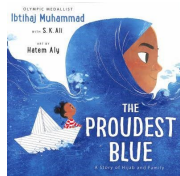
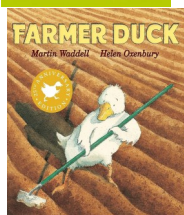
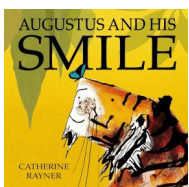
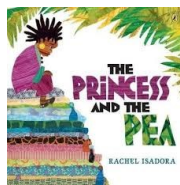
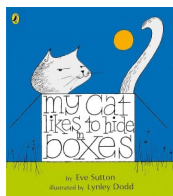
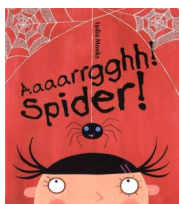


## Expressive Arts and design

The children will be exploring sculpture using clay and junk modelling to create models of farm animals.

They will be role playing caring for animals in the vets' role play and exploring moving like different animals.

## Our Super Six books for this half term



Can you draw a picture of your favourite character?



## Understanding the World

The children will be learning about farm animals and talking about their different features, such as feathers and claws. They will have the chance to watch as our eggs hatch and grow!

They will be learning about Easter and how people celebrate.

Can you spot any signs of Spring on your way to school?

